

Middletown Area Transit (MAT)

# Route D

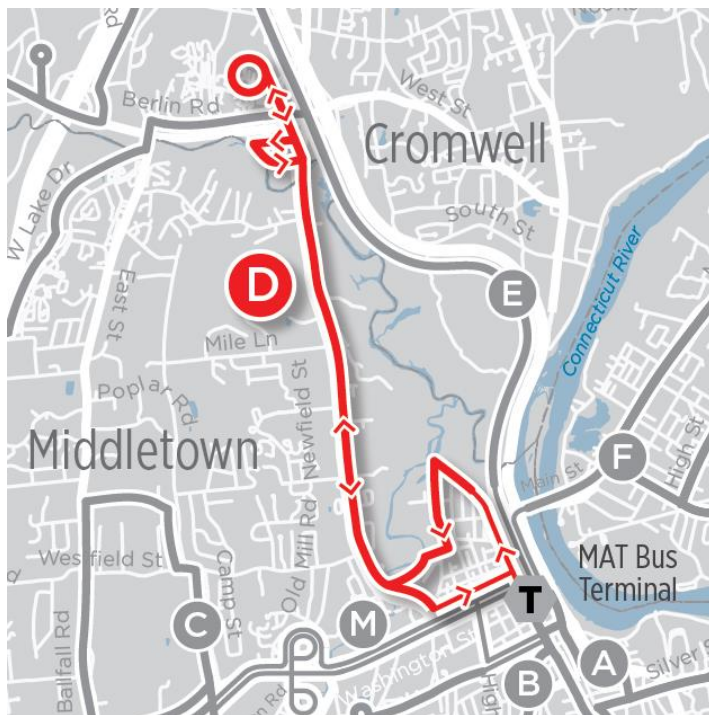
## Newfield Street

### Route Overview

Route D provides service in northeast Middletown, serving Newfield Towers, Stonycrest Towers, Middletown High School, Tuttle Road, and K-Mart Plaza/Shoprite in Cromwell. The route operates as a large one-way loop just north of downtown, and operates bidirectional service on Newfield Street. All trips begin and end in Downtown Middletown at the MAT Terminal. Route D primarily travels along Newfield Street, North Main Street, and Washington Street.

As of June 2019, the alignment for Route D was changed to discontinue the large terminal loop at the northern end of the route (serving Newfield Street, Tuttle Road, East Street, and Berlin Road) and instead operate more bidirectional service along Newfield Street. Figure 1 shows the current alignment for Route D.

**Figure 1: Route D Map**



Route D operates on weekdays only during daytime hours. Service operates from 6 a.m. until 6:50 p.m., with trips operating every 50 minutes. During weekday evenings, part of Route D's alignment is served by Route I. On Saturdays, Route S3 operates a combined route serving parts of both Route D's alignment and Route E's alignment.

**Table 1: Schedule Statistics**

Service Day	Span of Service	Frequency (Minutes)	Daily Trips
Monday – Friday	6 AM to 6:50 PM	50	16
Saturday	–	–	–

Middletown Area Transit, June 2019 Schedule

## Connections to Other Services

Route D begins and ends its trips in downtown Middletown at the MAT Terminal, which acts as a pulse point for the system allowing riders to connect to all other MAT routes. In addition, Route D riders can also connect to 9 Town Transit Route 644 Old Saybrook/Middletown and Route 645 Madison/Middletown, CTtransit Route 55 to Hartford. CTtransit Route 906 (Crowell Express) overlaps with a portion of Route D along West Street, with both systems serving the apartments at Cromwell Hills Drive (see Table 2).

**Table 2: Service Connections**

Location	Connect To
MAT Terminal	9 Town Transit Route 644, 645 CTtransit Route 55
Cromwell Hills Drive Apartments	CTtransit Route 906 (Express)

## Ridership by Stop

Route D's highest ridership stop is at the MAT Terminal, with 93 daily boardings and 69 daily alightings. Other high-ridership stops along Route D include:

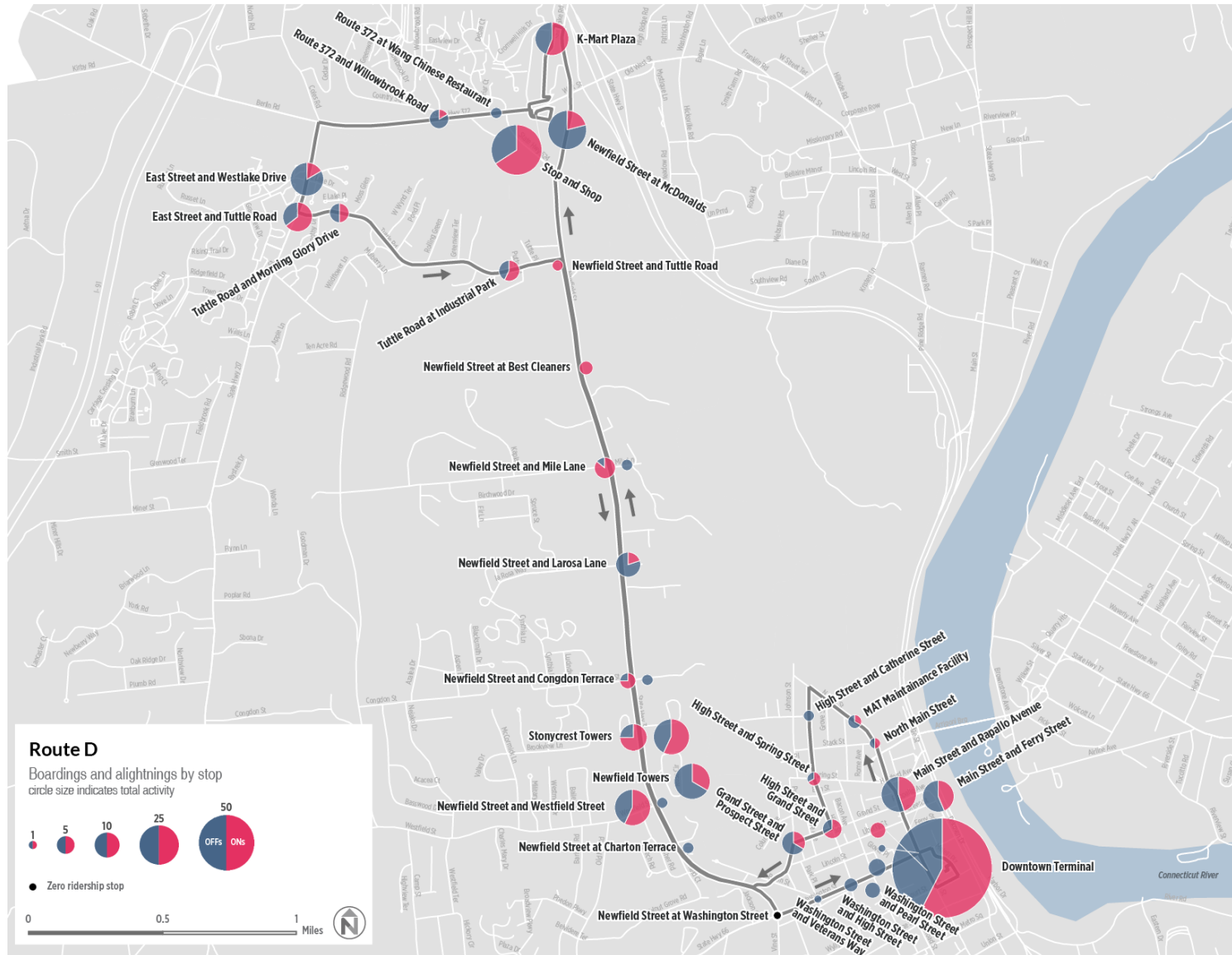
- Newfield Street at Stonycrest Towers (12 boardings and 9 alightings) and Newfield Street at Westfield Street (12 boardings and 9 alightings) serving Stonycrest Towers and Newfield Towers apartment buildings.
- Stop & Shop (27 boardings and 14 alightings) serving a shopping center.

The lowest ridership areas of the route are North Main Street and High Street. These stops serve residential areas and community destinations including a food pantry.

## Ridership by Trip

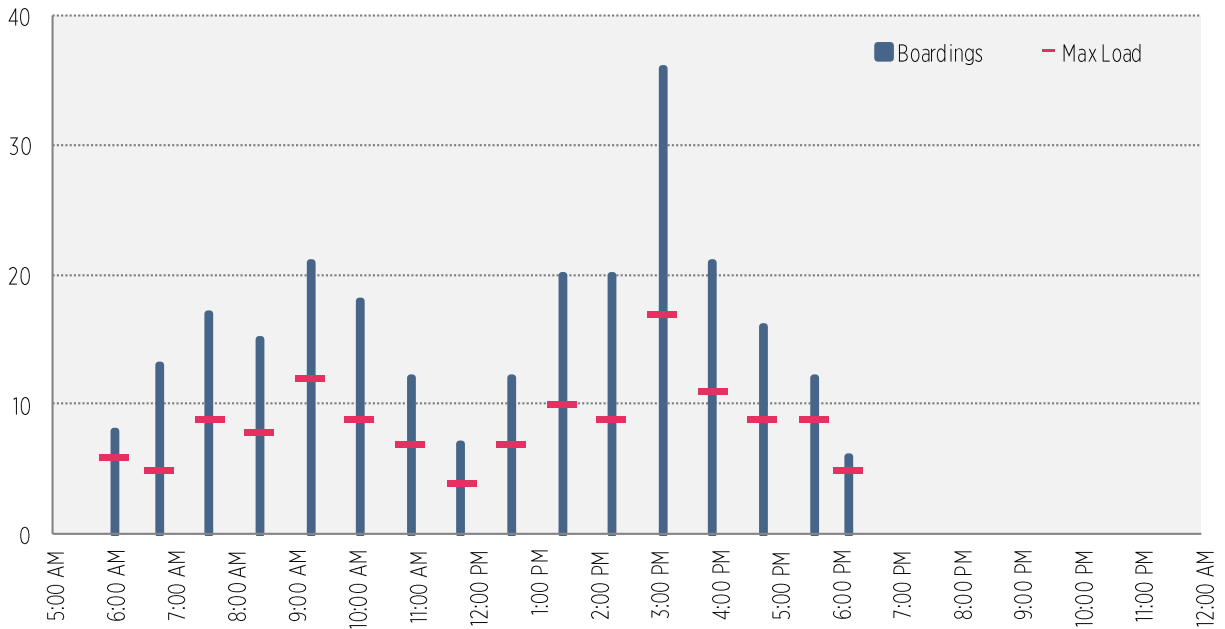
On weekdays, Route D ridership is highest through the afternoon and on some AM peak trips, with a significant dip in ridership around noon. Ridership is highest on the 3:05 p.m. trip, when 36 passengers board and the maximum load is 17 riders. Other trips between 1 p.m. and 4 p.m. carry at least 20 riders. In the morning, the 9:15 a.m. trip has 21 boardings and a maximum load of 12.

Figure 2: Ridership by Stop



Source: Middletown Area Transit, 2017 Route D Ridership Data

Figure 3: Ridership by Trip



Source: Middletown Area Transit, June 2019 Route D trips

### Service Performance

On weekdays, Route D carries an average of 169 passengers per day, or 13.0 passengers per revenue hour (see Table 3). Route D is the second-highest ridership route in the MAT system. In terms of productivity, Route D performs above the MAT average for riders per revenue hour and riders per trip.

Table 3: Productivity Statistics

	Average Weekday Ridership	Riders per Revenue Hour	Riders per Trip
<b>Route D</b>	169	13.0	10.6
<b>MAT Average</b>	95	8.7	7.5

Middletown Area Transit, June 2019

### Service Improvement Opportunities

Opportunities to strengthen Route D are listed below. Some suggestions may be contradictory, as there is usually more than one approach to improving a route. No specific changes are recommended at this time. Note that Route D’s alignment has changed significantly since ridership data was collected, and route changes introduced in June 2019 may impact the route’s service performance.

- Consistent alignment north of Downtown Middletown.** Route D operates along two different alignments when traveling outbound (North Main Street and High Street) or inbound (Washington Street), effectively operating a large one-way loop and serving the neighborhood north of Downtown in only one direction. Serving this neighborhood in both directions would make service easier to understand and more convenient for riders to complete a round trip. Outbound trips could operate via Main Street, Stack

Street, and High Street, and inbound trips via High Street, Stack Street, Rome Avenue, and Spring Street/Main Street.