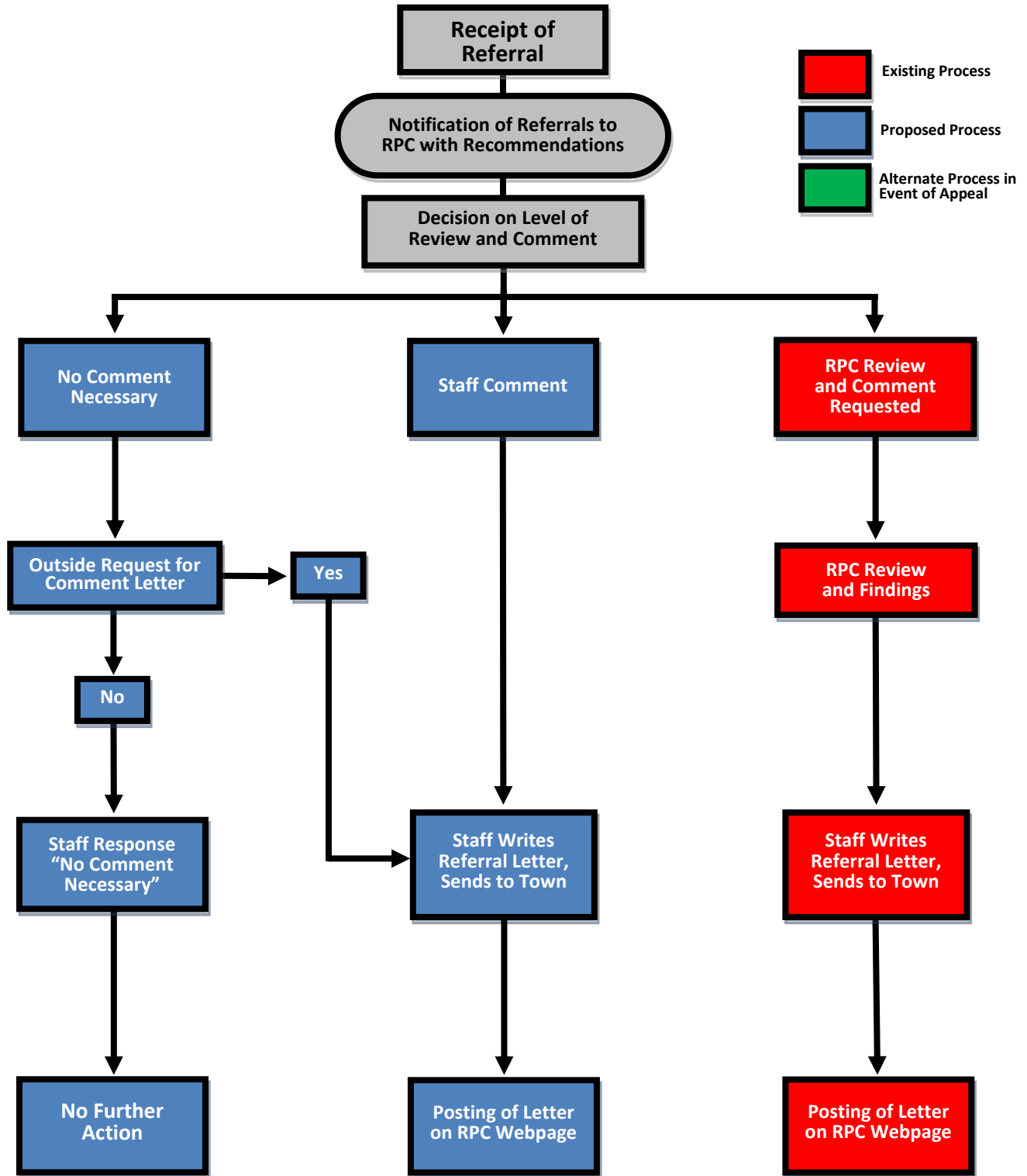
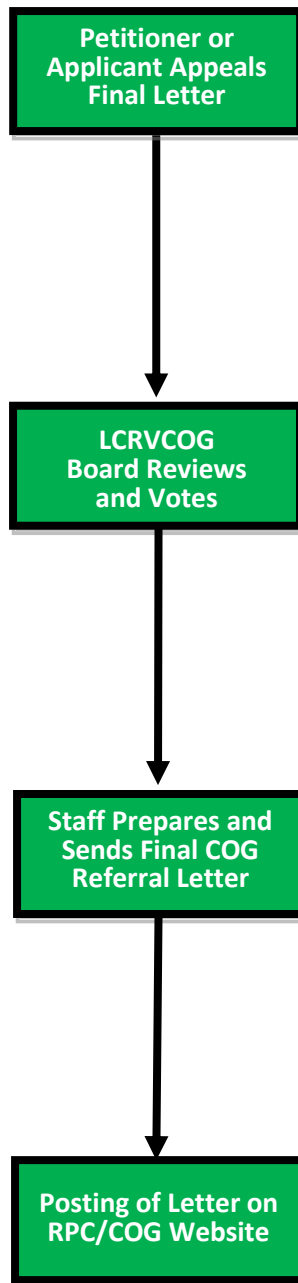


Regional Planning Committee Referrals Process



The intent of the process will be to provide staff, in consultation with the RPC, the ability to determine which referrals require staff-level or RPC-level review and comment, and which referrals are simple and technical in nature and require no review by staff or the RPC. Early notification will allow members to request RPC review where staff-level review or “no comment” conclusions have been made by staff. RPC request for review will automatically result in a referral being processed according to the current protocols.

Regional Planning Committee, Referrals, Alternate Process



As a general policy and with the review of the RPC Chair, any referral that that is deemed sensitive or complicated in any way, is out of the “ordinary” or may be thought to possibly create a higher level of intermunicipal impact or impact to the ecology and ecosystem of Long Island Sound pursuant to Section 8-3b CGS will be automatically brought before the Regional Planning Committee for deliberation and vote.