

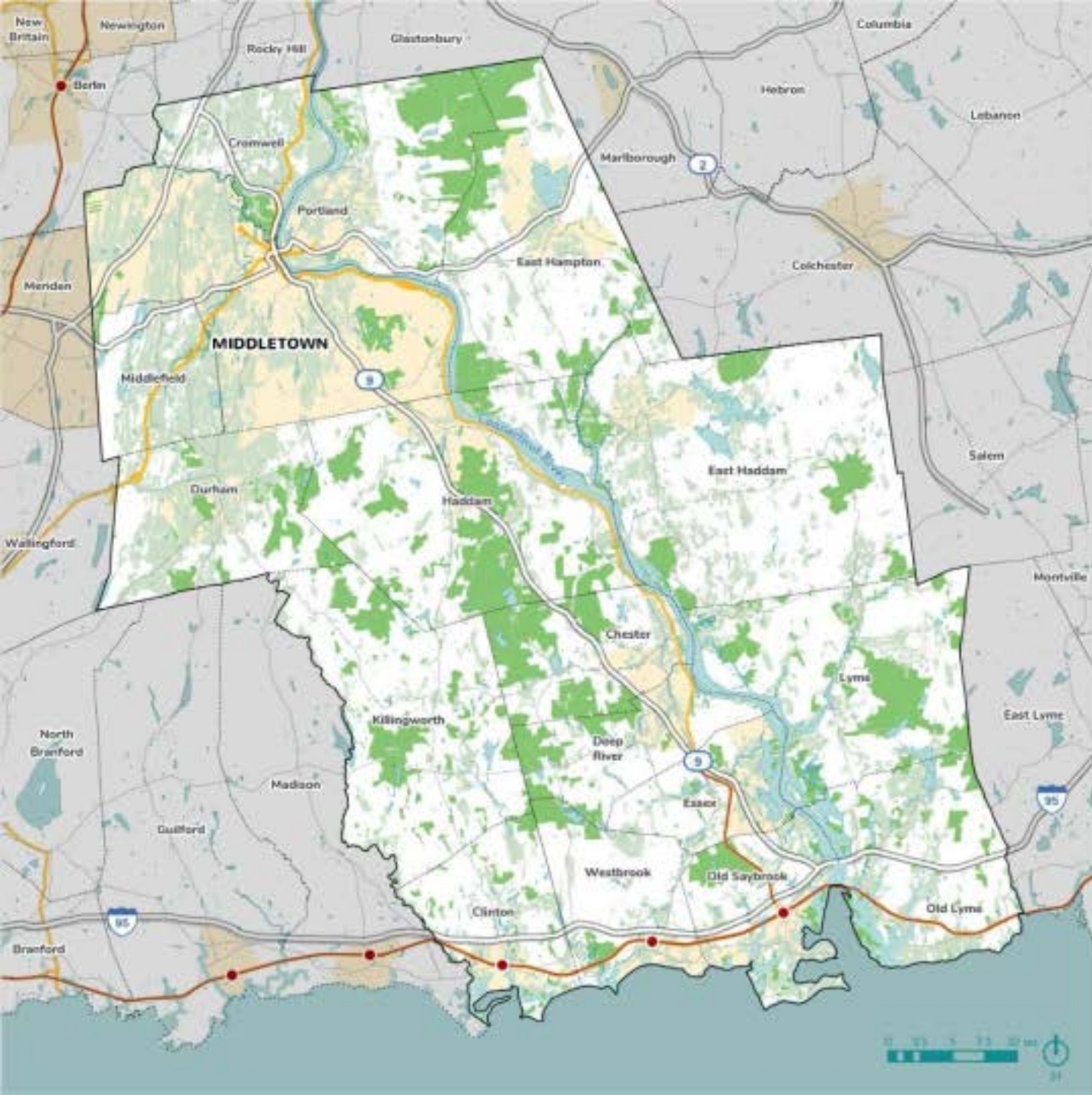
Appendix 2



RIVERCOG REGION

Source: Interface Studio.

-  Study Area
-  Regional Boundaries
-  Passenger Rail
-  Freight Rail
-  Places and Major Cities
-  Parks and Open Space

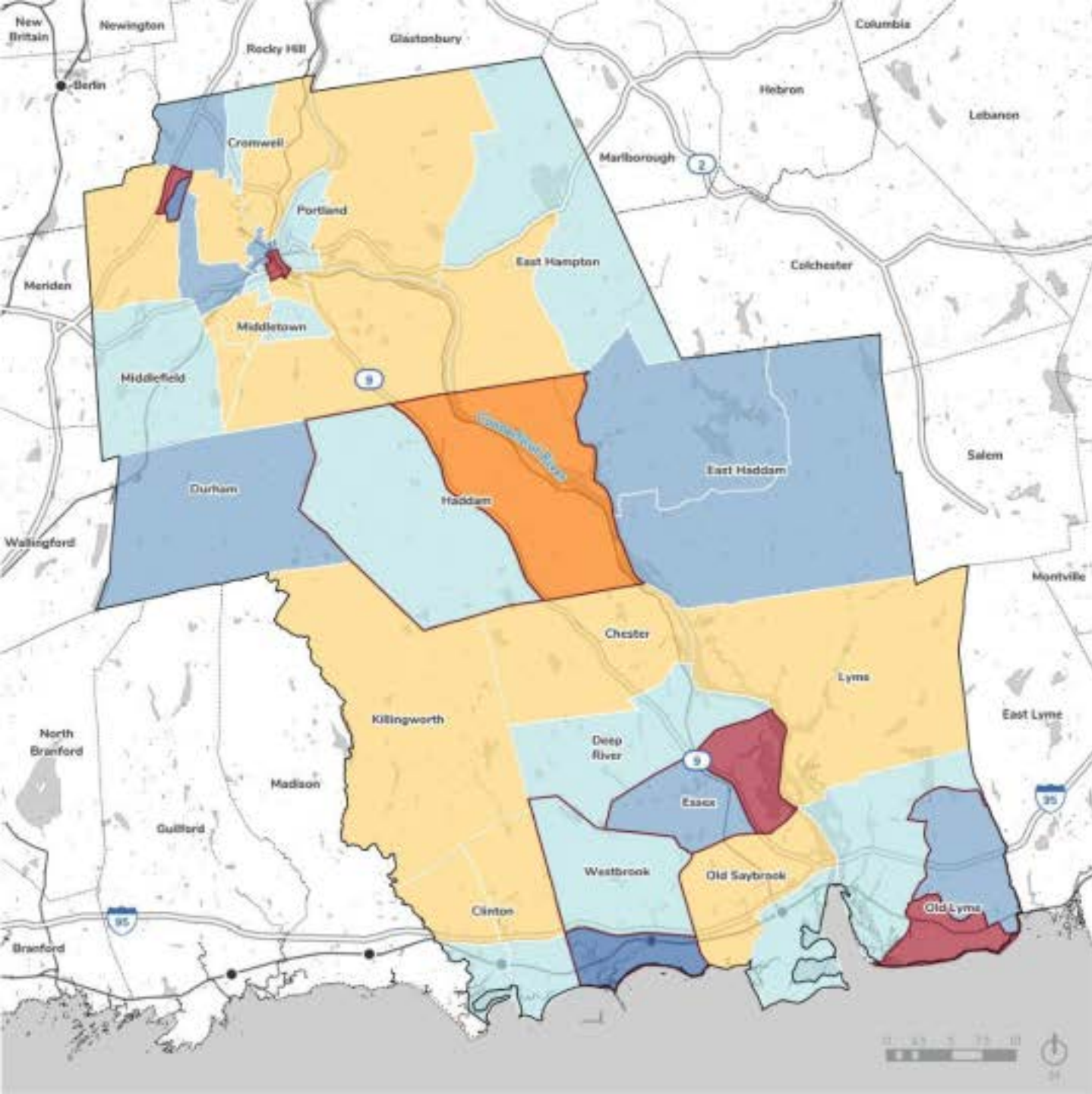


RIVERCOG STUDY AREA

Source: Interface Studio.

- Study Area
- Town Boundaries
- Passenger Rail
- Freight Rail
- Water body
- Open Space
- Farmland Soils






PERCENT CHANGE IN HOUSEHOLDS

Source: U.S. Census 5-year ACS 2013-2020, Interface Studio.

 Study Area

 Over 20%


 10% to 20%

 10% to 0%

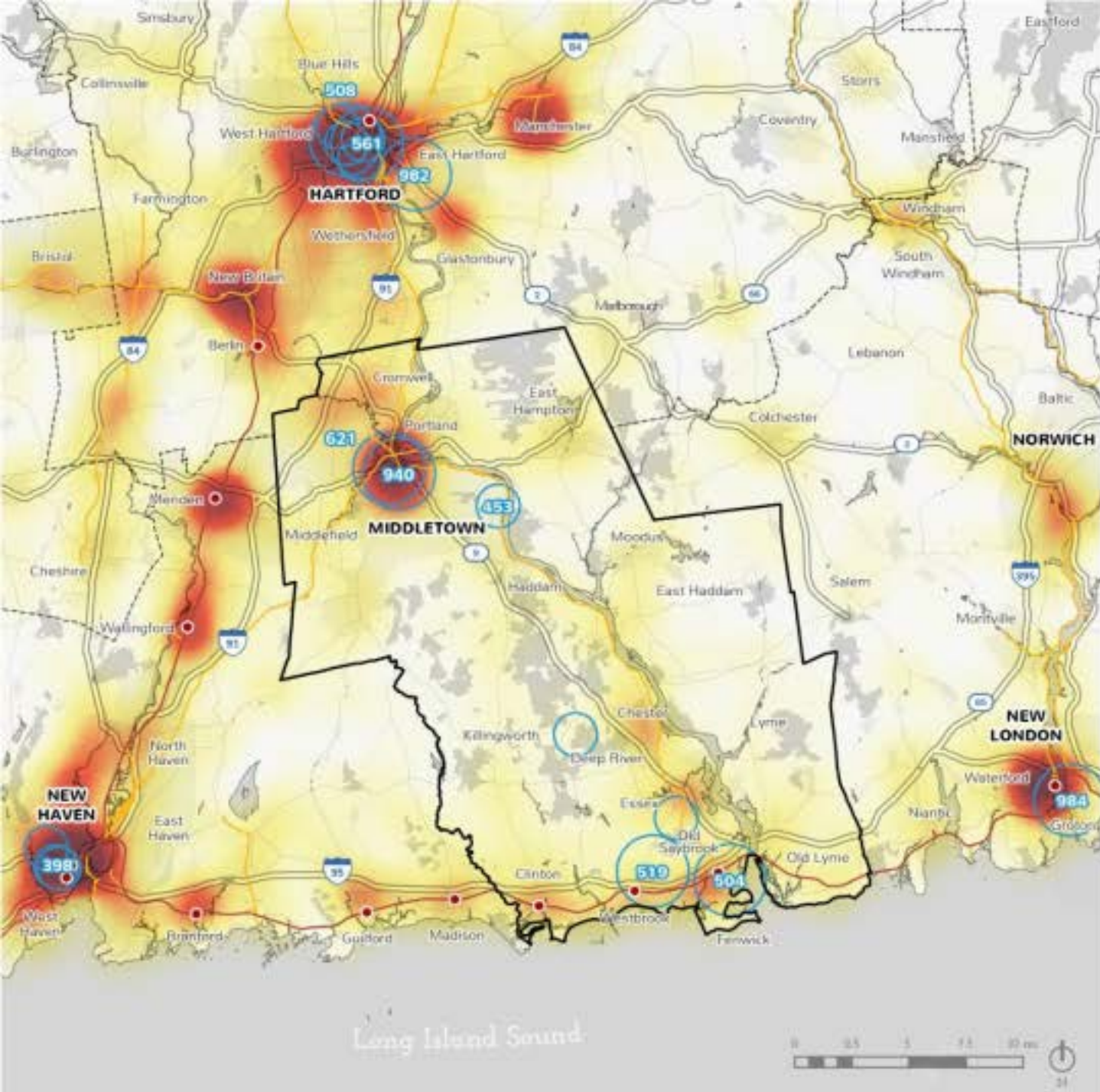
 0% to -10%

 -10% to -20%

 Under -20%

 U.S. Census Tracts changed between 2013 and 2020

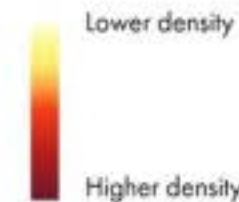




JOB DENSITY

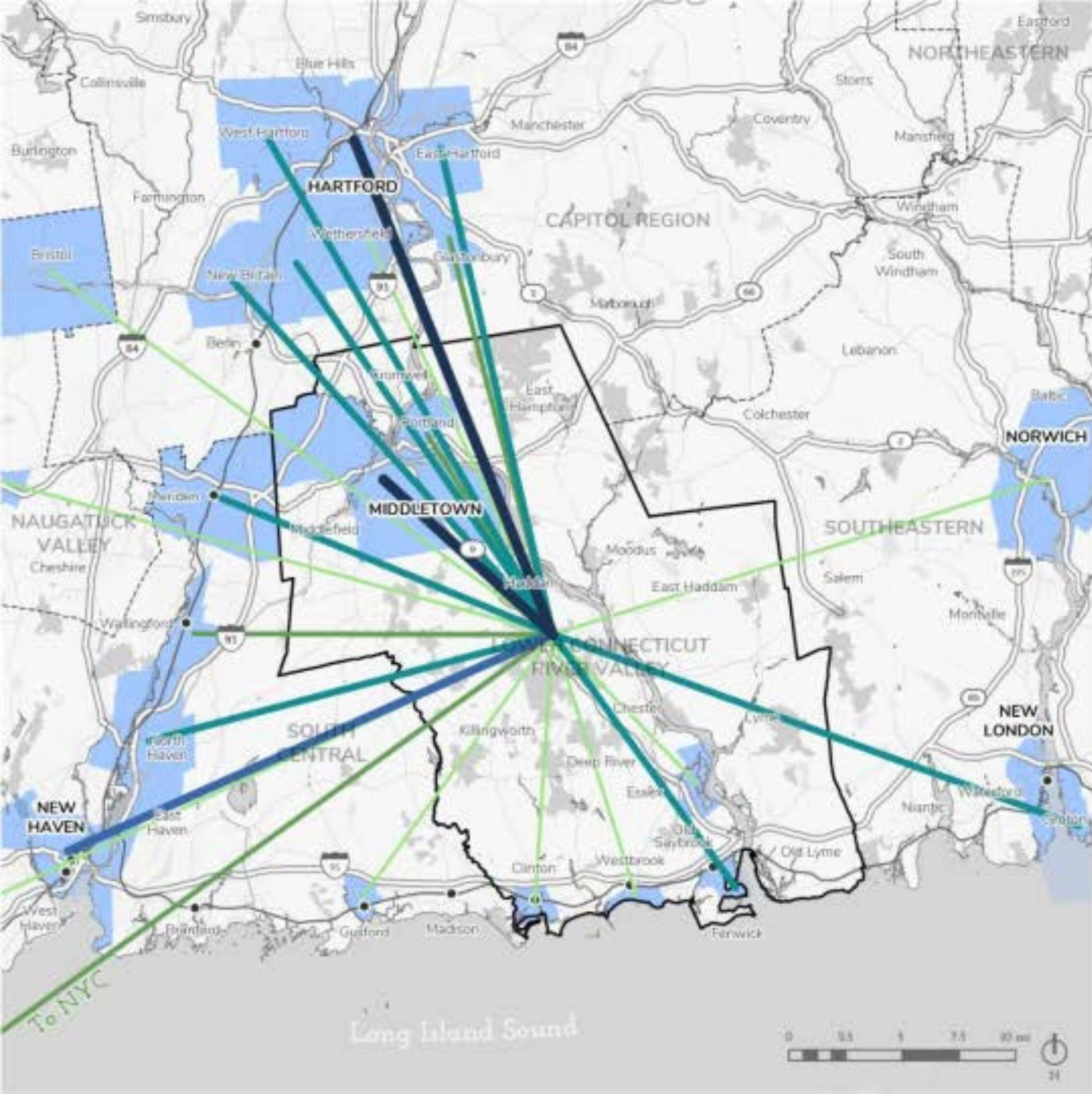
Source: LEHD Area Job Profile, 2019.

Study Area



Areas with high job concentrations





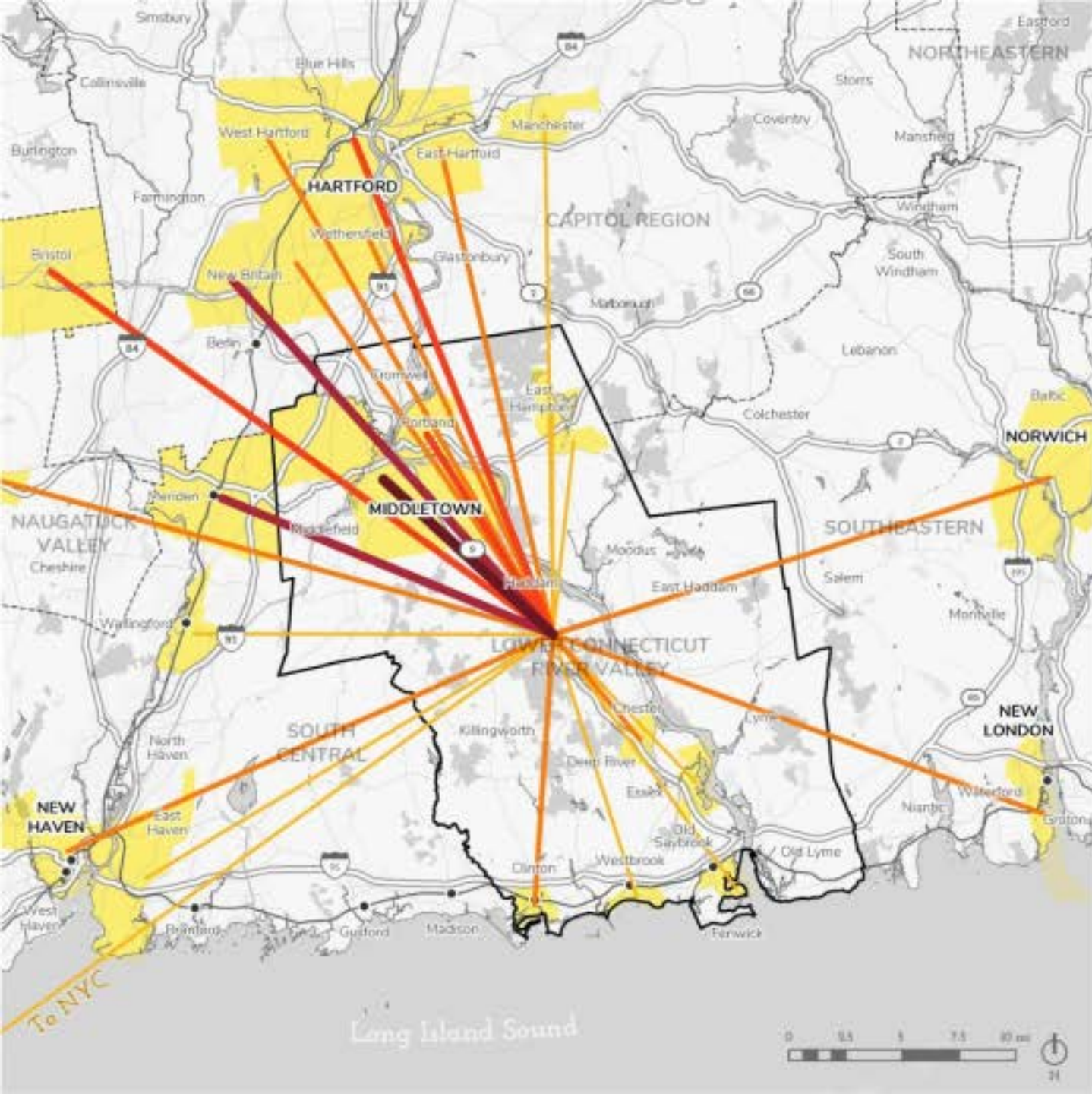
WHERE RIVERCOG RESIDENTS WORK

Source: LEHD Inflow-Outflow Analysis, 2019



79,272
RiverCOG residents
commute to work

| Top Ten Places | Count | Share |
|-------------------|-------|-------|
| Middletown, CT | 7,413 | 9.4% |
| Hartford, CT | 6,080 | 7.7% |
| New Haven, CT | 3,454 | 4.4% |
| East Hartford, CT | 2,253 | 2.8% |
| Meriden, CT | 1,932 | 2.4% |
| New Britain, CT | 1,396 | 1.8% |
| Newington, CT | 1,291 | 1.6% |
| Old Saybrook, CT | 1,154 | 1.5% |
| West Hartford, CT | 1,121 | 1.4% |
| Groton, CT | 1,078 | 1.4% |



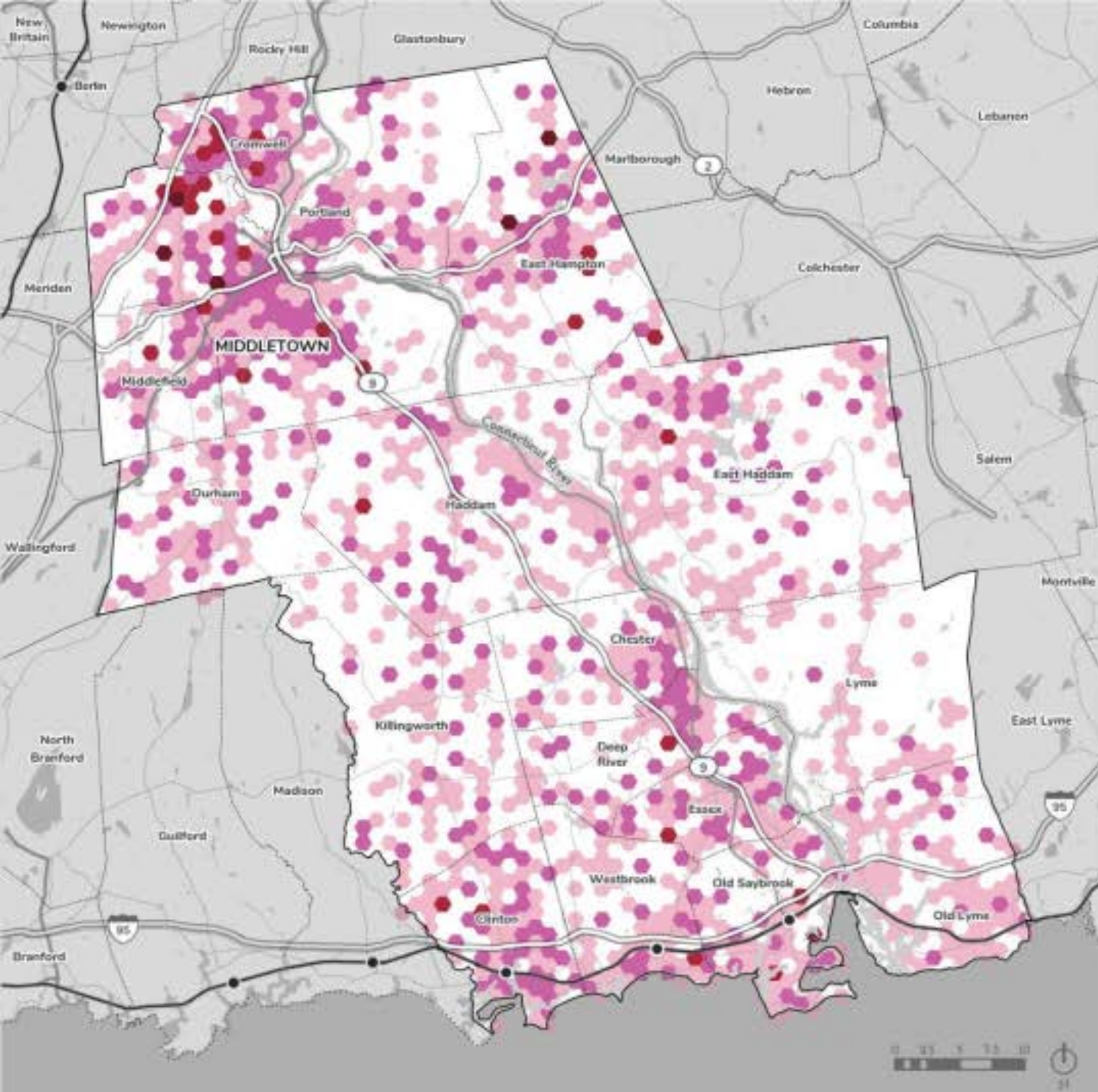
WHERE RIVERCOG WORKERS LIVE

Source: LEHD Inflow-Outflow Analysis, 2019



62,119
RiverCOG workers
commutes to home

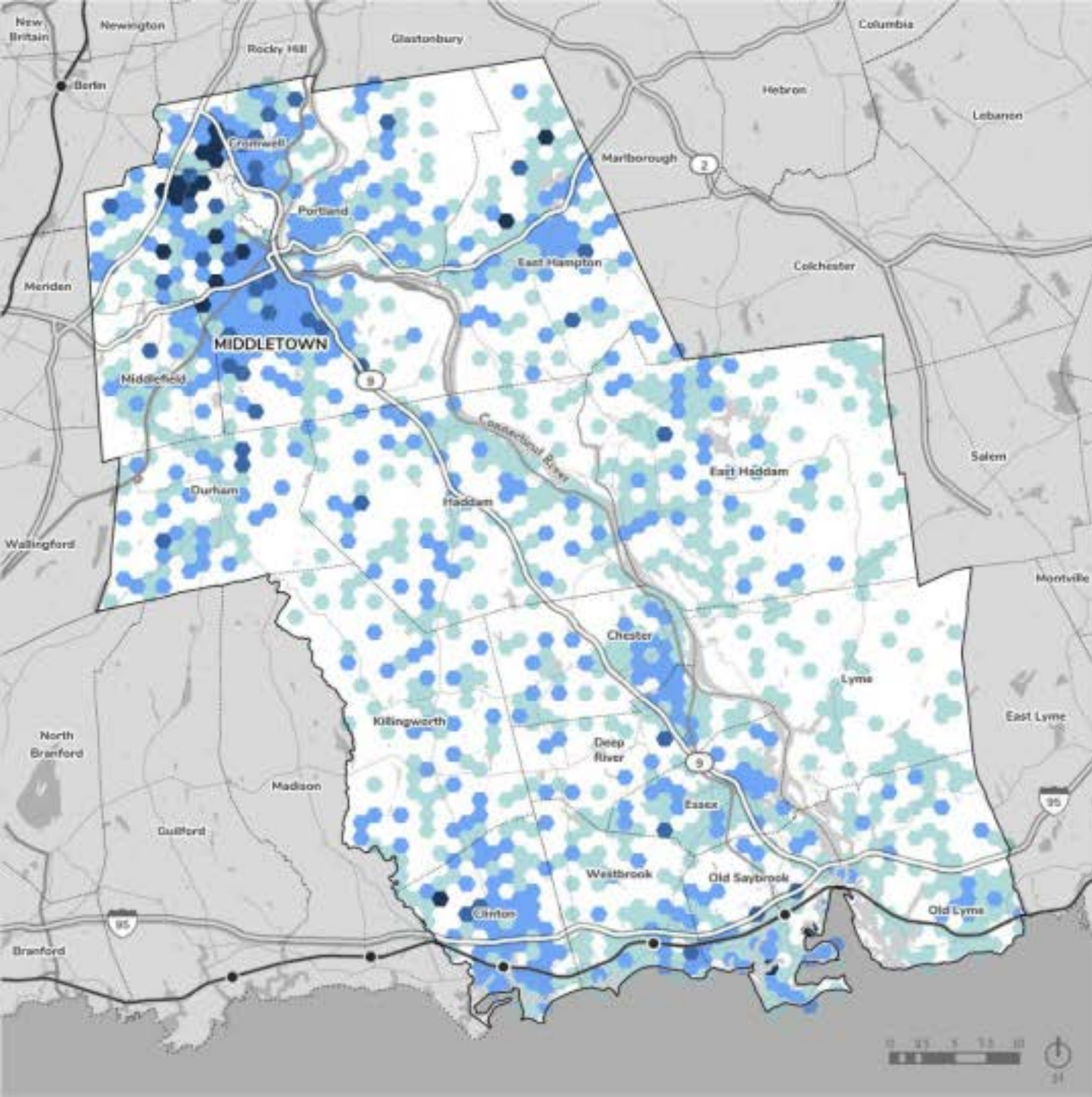
| Top Ten Places | Count | Share |
|-------------------|-------|-------|
| Middletown, CT | 5,854 | 9.4% |
| Meriden, CT | 2,200 | 3.5% |
| New Britain, CT | 1,513 | 2.4% |
| Hartford, CT | 1,075 | 1.7% |
| Bristol, CT | 901 | 1.5% |
| Portland, CT | 807 | 1.3% |
| East Hartford, CT | 750 | 1.2% |
| New Haven, CT | 709 | 1.1% |
| Newington, CT | 686 | 1.1% |
| West Hartford, CT | 673 | 1.1% |



WHERE MANUFACTURING EMPLOYEES IN RIVERCOG LIVE

Source: LEHD Area Work Profile by NAICS Industry Sector, 2019

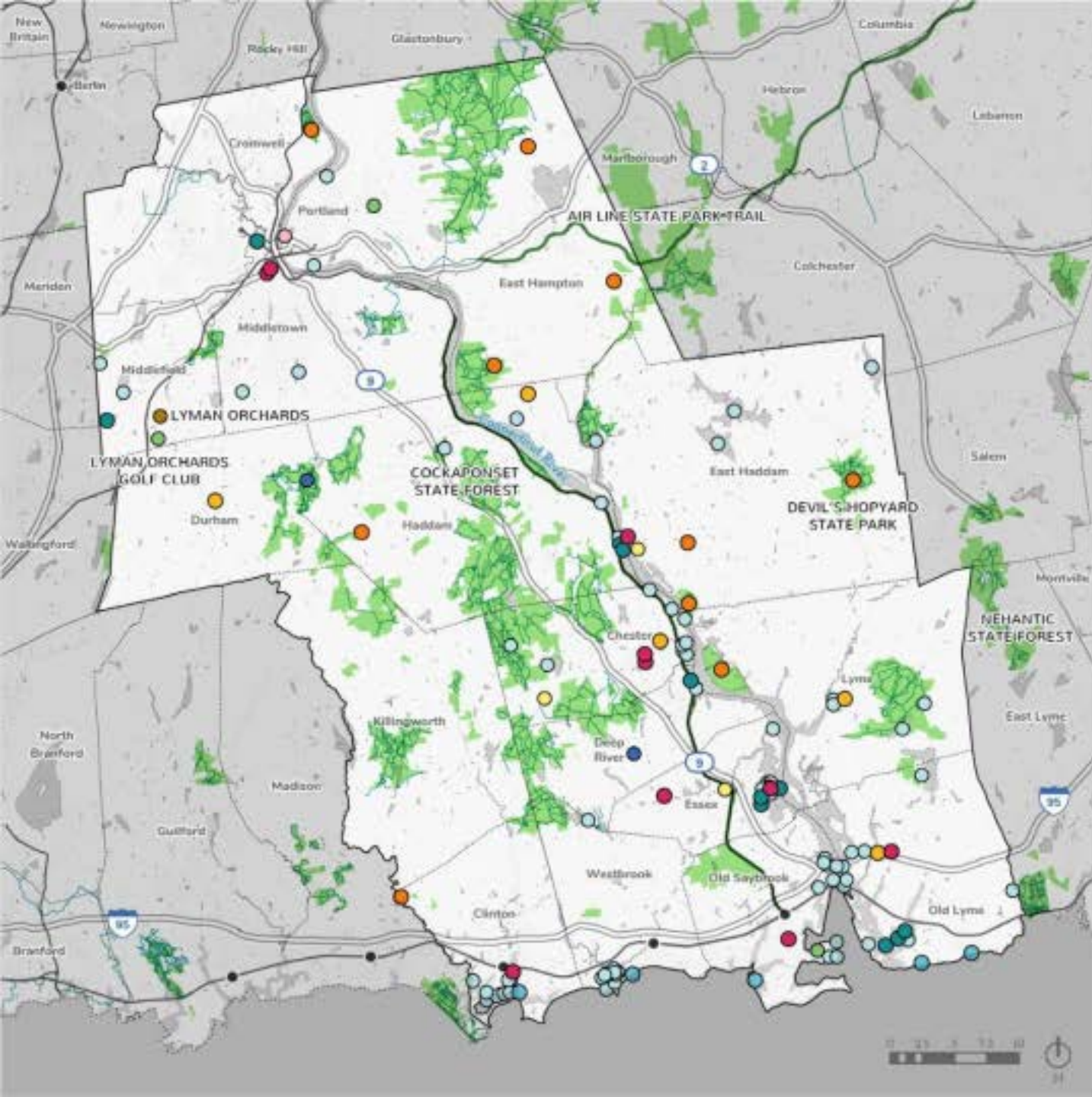
-  Study Area
-  1 - 5 Employees
-  5 - 25 Employees
-  25 - 50 Employees
-  50 - 97 Employees



WHERE HEALTHCARE EMPLOYEES IN RIVERCOG LIVE

Source: LEHD Area Work Profile by NAICS Industry Sector, 2019

- Study Area
- 1 - 5 Employees
- 5 - 25 Employees
- 25 - 50 Employees
- 50 - 152 Employees

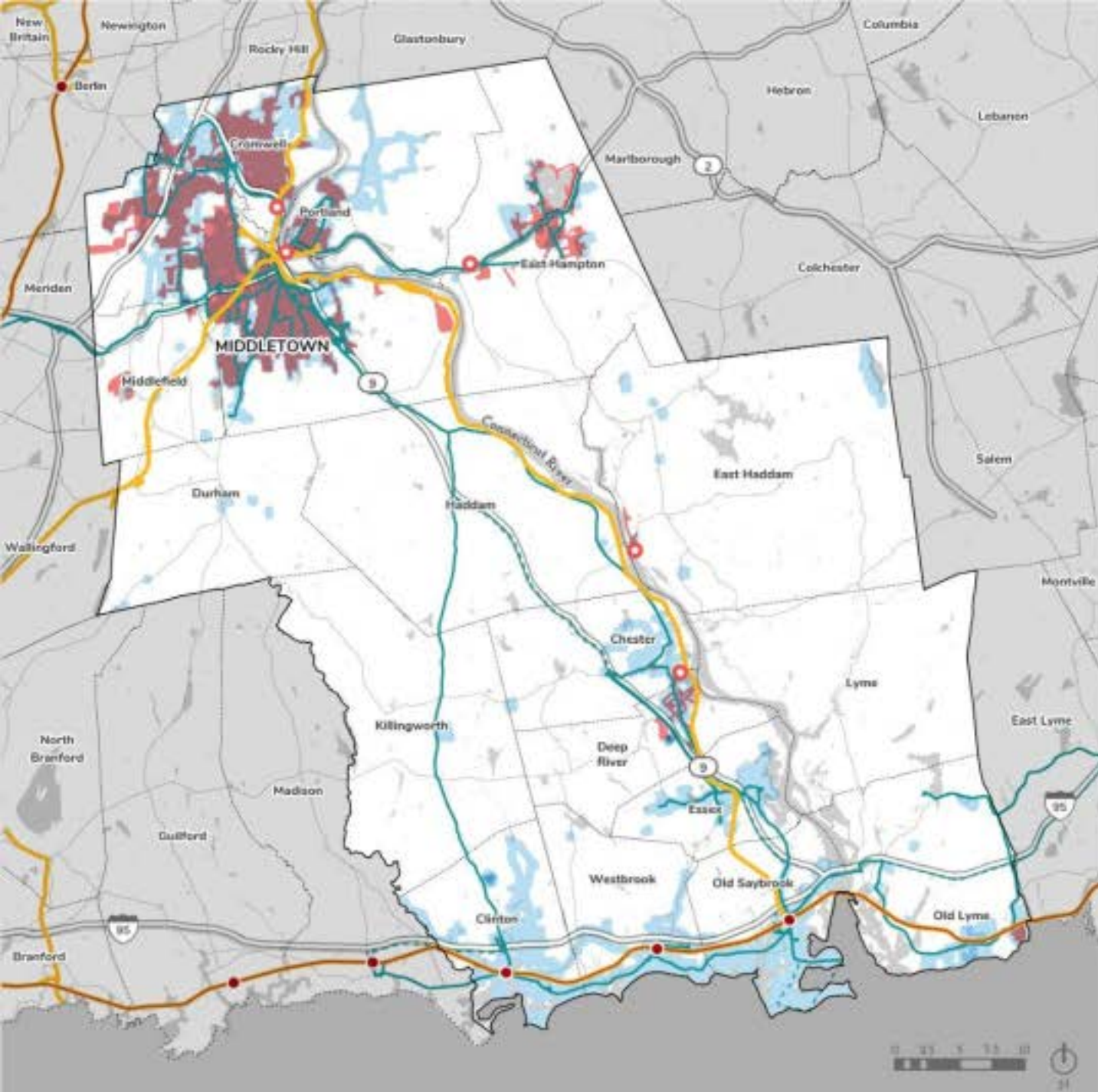


RECREATIONAL DESTINATIONS, EVENTS & AMENITIES

Source: RiverCOG, CT Department of Energy and Environmental Protection (DEEP)

-  Study Area
-  State Parks, Forests, and Scenic Reserves
-  State Park Trails
-  DEEP Trails
-  Permanent Fair Grounds & Festival Sites
-  Campgrounds
-  Agrotourism
-  Scenic Routes
-  Golf Course
-  Water-Related Activities
-  Public Beaches
-  Marinas & Boat Launches
-  Swimming
-  Theaters & Museums





ECONOMIC INFRASTRUCTURE

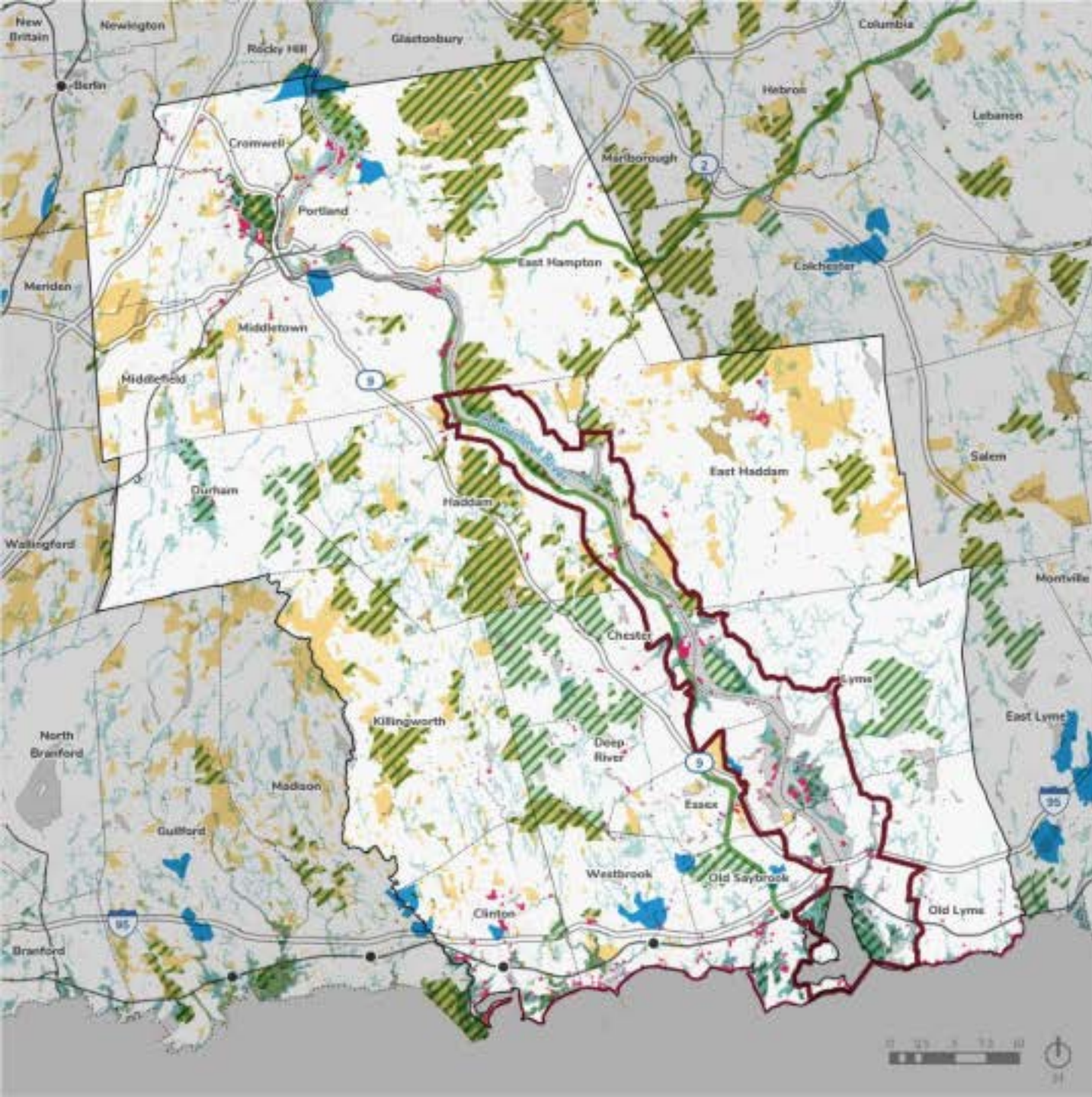
Source: RiverCOG

- Study Area
- Passenger Rail
- Freight Rail

- Estuary Transit District**
- Existing Shuttle Service
- - - Potential Shuttle Service

- Utilities Service Areas**
- Served by Public Water
- Served by Sewer
- Served by Sewer & Public Water
- Sewer Treatment Plants





ENVIRONMENTAL CONSTRAINTS

Source: Source: RiverCOG, CT Department of Energy and Environmental Protection (DEEP) National Parks Service (NPS).

-  Study Area
-  Acquifer Protected Area
-  Protected Open Space
-  State Parks, Forests, and other DEEP Property
-  State Park Trails
-  Wetlands
-  Flood Hazard Area
-  Gateway Conservation Area

These environmental constraints have a regulatory impact on development.